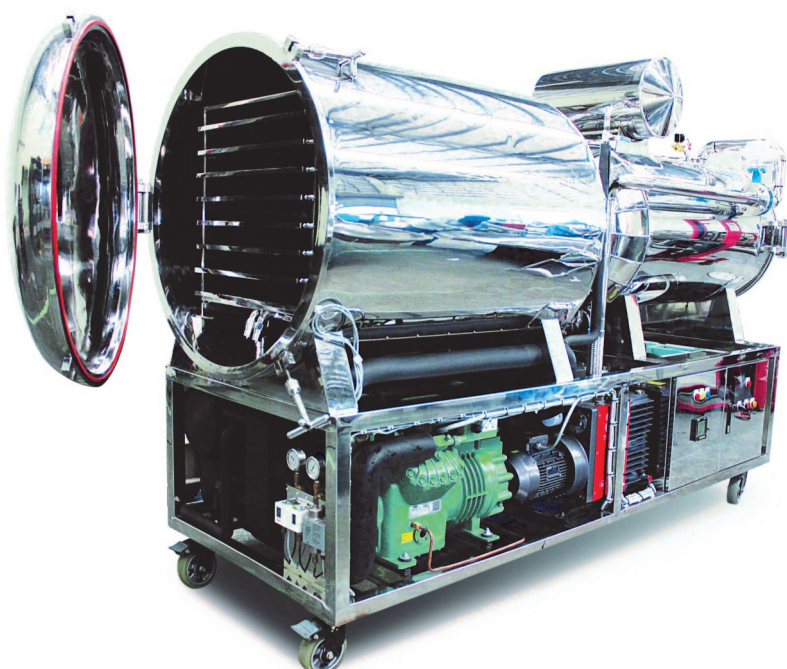




FD60

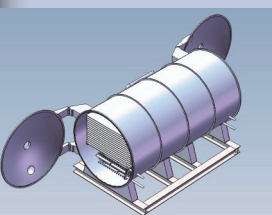
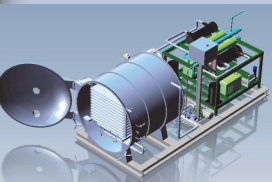
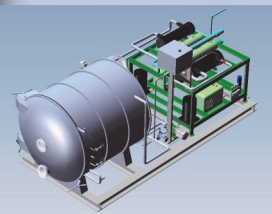
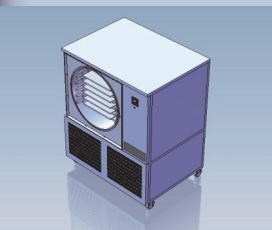
Pilot Freeze Dryer

Www.siamfreezedry.com
Hot line: 081-899-0952
Line id: siamfreezedry



Epsilon Co., Ltd.
www.siamfreezedry.com e-mail: pokinb@gmail.com





General

The Epsilon FD-60 Freeze Dryer has been designed after careful consideration of all the factors necessary for food freeze drying techniques. The FD-60 General Purpose Freeze Dryer is capable of drying a variety of biologicals such as fruit and vegetables and diverse products such as blood/plasma, mushrooms to mussels. Epsilon Co.,Ltd. has been developing and manufacturing freeze dry and vacuum drying equipment for over 15 years.



Chamber and door

The round shape chamber has product loading unloading door. The door has smooth and easy lock system with correct alignment and sealing against chamber. The door made from SUS304 with clear acrylic to allow visual monitor both product and vapor condenser. The chamber made from stainless steel SUS304 with diameter 1100mm and 1100mm depth.

Shelves

Shelves made from stainless steel flat both side complied to hygienic standard consist of 8 shelves.(4.86 sq.m)
Product tray made from SUS304 provide 2 sets per machine

Vapor Condenser

Condenser produced from stainless steel by double embossed plate type. Refrigeration of the plate is by direct expansion valve via thermostatic valve.

Defrosting

Defrosting ice from the vapor condenser after a product cycle is hot water to make a rapid process for high volume.

Refrigeration

The FD60 Freeze dryer has 1 water cooled condensing unit with non-cfc refrigerant. Bitzer 2 stage compressor is standard.

Vacuum System

The vacuum pump system has capacity approximately 80 cubic meter per hour. Vacuum pump type are Edwards 2 stages rotary with ultimate pressure 4×10^{-3} mbar. Vacuum pump connected to the chamber isolated by electric vacuum solenoid valve. The pump features an automatic isolating valve to hold the chamber pressure in the event of power failure or vacuum value not reach as set point.

Heating System

The heating fluid is silicone oil and is circulated by in magnetic drive pump, allow heated or cooled fluid to be circulated through the plates. A cooling heat exchanger is provided in the circuit.

Instrumentation

All instruments used complied national safety standard.

Vacuum pump: Edwards, vacuum gauge: Edwards, Compressor: Bitzer, PLC: Omron, Electrical system are telemecanique.



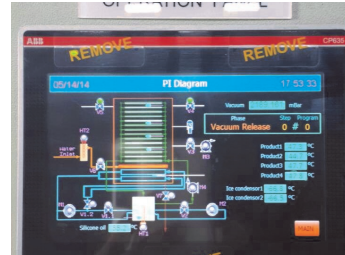


Smart Program

User friendly and easy to access step by step for user guide.
Easy to storage data by flash drive through PLC

Product testing

A wide range of product to be processing from freeze dryer such as dietary supplementary, fruit, foods, vegetable, medicine.



Capacities and cycle time

FD60 freeze dryer has a quality acceptance by factory testing are 60 kg per batch and capable to continuous operated on demand per batch as the standard of freeze dry process.

The capable of vapor condenser capacity of ice within 24 hours equates 60 kg. of ice.

Overall Specifications

Overall Dimensions:	1200mm wide x 3550 mm depth x 2200 mm height
Number of shelves:	8
Shelves capacity area:	4.86 sq.m
Refrigeration:	12 hP Bitzer 2 stages Compressor
Refrigerant:	R404a
Shelves temperature:	-50C to +70C
Heating and cooling medium:	Silicone oil
Ice Condenser:	SUS304 Double embossed plate type
Ice condenser capacity:	60kg per 24hours
Ice condenser temperature:	-65C
Vacuum pump:	Edwards 2 stages rotary vane pump or equivalent
Power requirement:	25kW 50 amp, 3 phase 380Volt
Weight :	Approx. 2500kg.

Specifications subject to change without prior notice



Epsilon Company Limited

54 Moo13
Bueng Kham Proi sub district,
Lamlukka District
Pathumthani12150 Thailand



Tel: 0-2150-2148 line id: siamfreezedry Mobile: 081-899-0952
<http://www.siamfreezedry.com> e-mail: pokinb@gmail.com